

Section 5

Maintenance and Assembly Drawings

General Information

Use the mechanical assembly drawings when troubleshooting or replacing components and use the associated parts list when ordering replacement parts. Item parts that do not have associated part numbers are not available and need to be ordered using the next highest assembly number.



Caution • Observe proper electrostatic safety precautions when handling any static-sensitive components such as circuit boards and printheads.

Table 5-1. Main Printer Assemblies

ITEM	PART NUMBER	DESCRIPTION	QTY
1	77695M	Electronics Cover	1
2	77667M	Front Panel Assembly Maintenance Kit	1
3	77302M	Static Brush Assembly Kit (Z4M) (See Figure 5-7)	1
3	77302-6M	Kit, Maintenance Static Brush (Z6M) (See Figure 5-7)	1
4	77629	Cover, Rear (Z4M)	1
4	77704	Cover, Rear (Z6M)	1
5	77100M	Kit, Maintenance Ribbon Take-Up (Z4M)	1
5	77117M	Kit, Maintenance Ribbon Take-Up (Z6M)	1
6	77380M	Kit, Maintenance Hanger (Z4M)	1
6	77381M	Kit, Maintenance Hanger (Z6M)	1
7	77085M	Assembly, Ribbon Supply Maintenance Kit (Z4M)	1
7	77082M	Assembly, Ribbon Supply Maintenance Kit (Z6M)	1
8	77238M	Kit, Maintenance Dancer (See Figure 5-8) (Z4M)	1
8	77331	Kit, Maintenance Dancer (See Figure 5-8) (Z6M)	1
9	77171M	Kit, Maintenance Printhead Mechanism w/ Printhead (203 dpi) (Z4M) (See Figure 5-6 .)	1
10	77752M	Kit, Maintenance Optical Media Sensor (Transmissive)	1
11	77765M	Kit, Maintenance Ribbon/Head Open Sensor	1
12	77034M	Kit, Maintenance Media Door (Z4M)	1
12	77035M	Kit, Maintenance Media Door (Z6M)	1
13	77023M	Kit, Maintenance Shaft Platen (Z4M) (See Figure 5-4)	1
13	77022M	Kit, Maintenance Shaft Platen (Z6M) (See Figure 5-4)	1
14	77049-104	Plate, Ribbon Stripe (Z4M)	1
14	77049-168	Plate, Ribbon Stripe (Z6M)	1
15	44014	Rubber Bumper	4
16	N/A	Base	1
17	N/A	Mainframe	1
18	77665	Cover, Front (Z4M)	1
18	77702	Cover, Front (Z6M)	1
N/S	77112M	Print Mechanism Latch Kit (See Figure 5-10 for Assembly breakdown)	1
N/S	77971	Cutter Kit Option (Z4M) (See Figure 5-12)	1
N/S	77972	Cutter Kit Option (Z6M) (See Figure 5-12)	1
N/S	77817	Flash Memory Kit Option (1 Mb) (See Figure 5-17)	1
N/S	77818	Flash Memory Kit Option (2 Mb) (See Figure 5-17)	1
N/S	77819	Memory Card (PCMCIA) Interface Option (See Figure 5-2)	1
N/S	77800M	Z Series Hardware Kit (Not Illustrated)	1
N/S: Not Shown			
N/A: Not Available Separately			

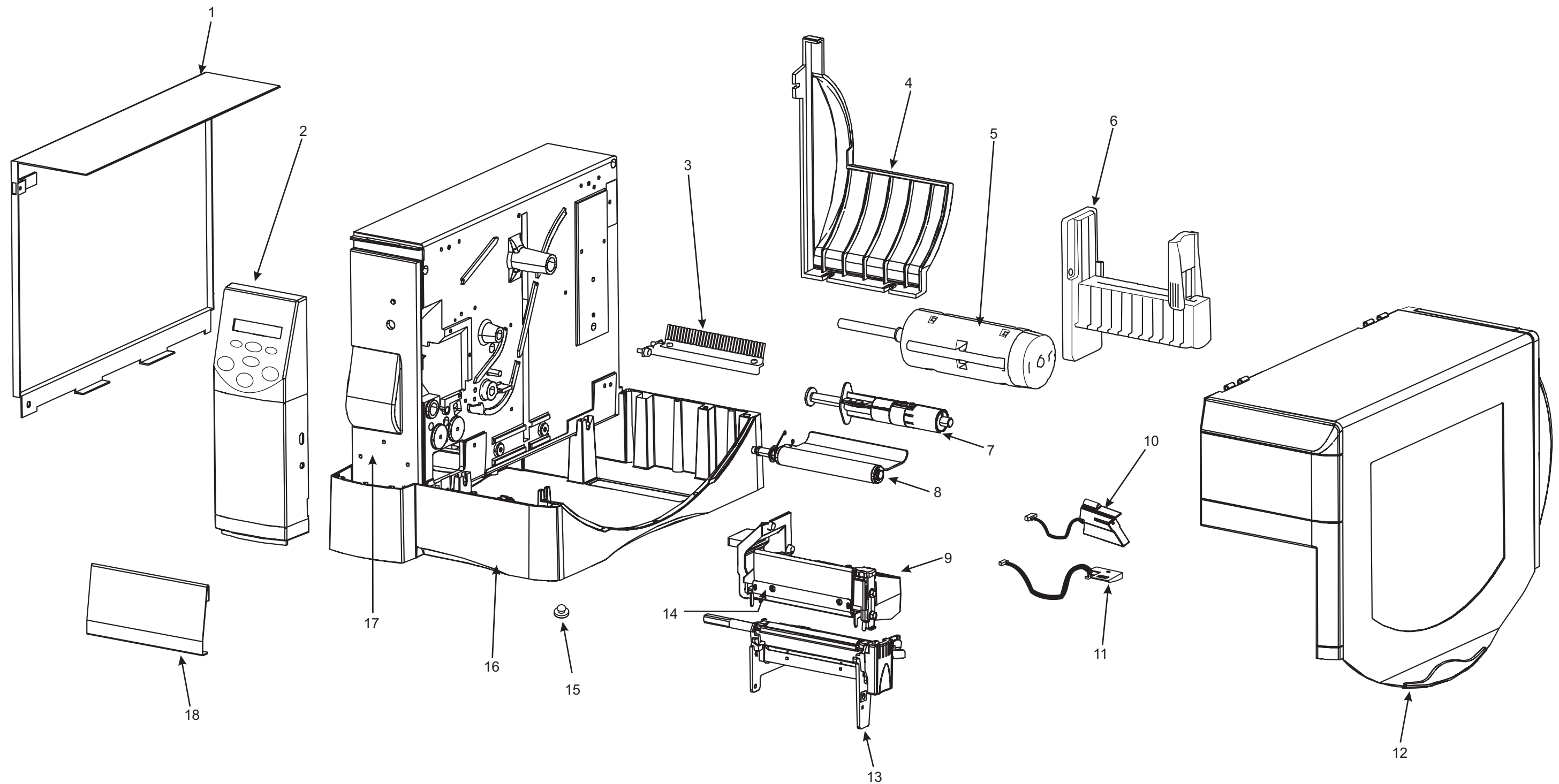


Figure 5-1. Main Printer Assemblies

Table 5-2. Electronics Maintenance Kits

Item	Part Number	Description	Quantity
1	77186	Plate, Back Cover, w/PCMCIA Port	1
1	77185	Plate, Back Cover, w/o PCMCIA Port	1
2	77237	Screw, M4 X 10	8
3	77715M	Power Supply Board Maintenance Kit	1
4	77550	Insulator, Pad	1
5	77282	Pad, Clamp	1
6	77571	Insulator, Electric Barrier	1
7	77016	Clamp, Heatsink Power Supply	1
8	49185	Screw, M3 X 14	3
9	**N/A	Screw, M4 x 16	3
10	77187	Bracket, CPU Support	1
11	Q06020	Tie Wrap	2
12	77904M	Main Logic Board Maintenance Kit	1
13	07696	Screw, 4-40, Pan Head	2
14	01153	Washer, Flat	4
15	22416	Standoff	2
16	07808	Clamp, Cable Flat	6
17	**N/A	Screw, Hex M4 x 0.7 x 8	1
18	77819	Memory Card (PCMCIA) Interface Option Kit	1
19	**N/A	Washer, Insulated	3
20	**N/A	Standoff	1
21	**N/A	Memory Card (PCMCIA) Interface	1
22	**N/A	Plate, Stud	1
23	**N/A	Fastener, Push-In	1
24	77520	Connector, Elastomeric for PCMCIA Interface	1
25	77315	Nut, Thumb for PCMCIA Interface	3
*N/S	77600	Cable, PSU-MLB	1

*N/S: Not Shown
 **N/A: Not Available Separately

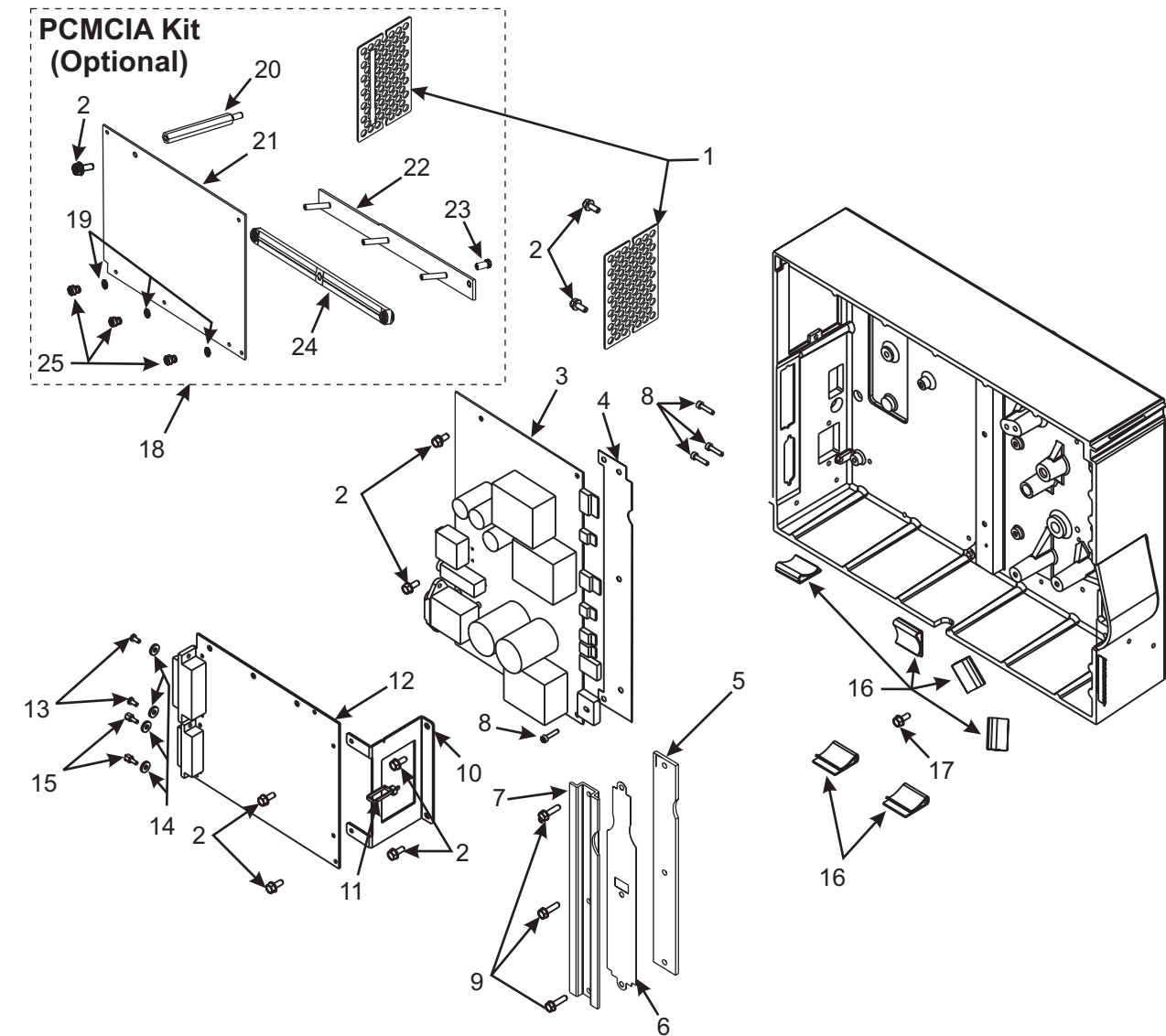


Figure 5-2. Electronics Maintenance Kits

Table 5-3. (Reflective) Media Sensor Assembly Maintenance Kit

ITEM	PART NUMBER	DESCRIPTION	QTY
REF	77807M	Kit, Maintenance Media Sensor Assembly (Reflective)	1
1	N/A	. Media Sensor Assembly	1
2	Q06020	. Tie Wrap	3
N/A: Not Available Separately			

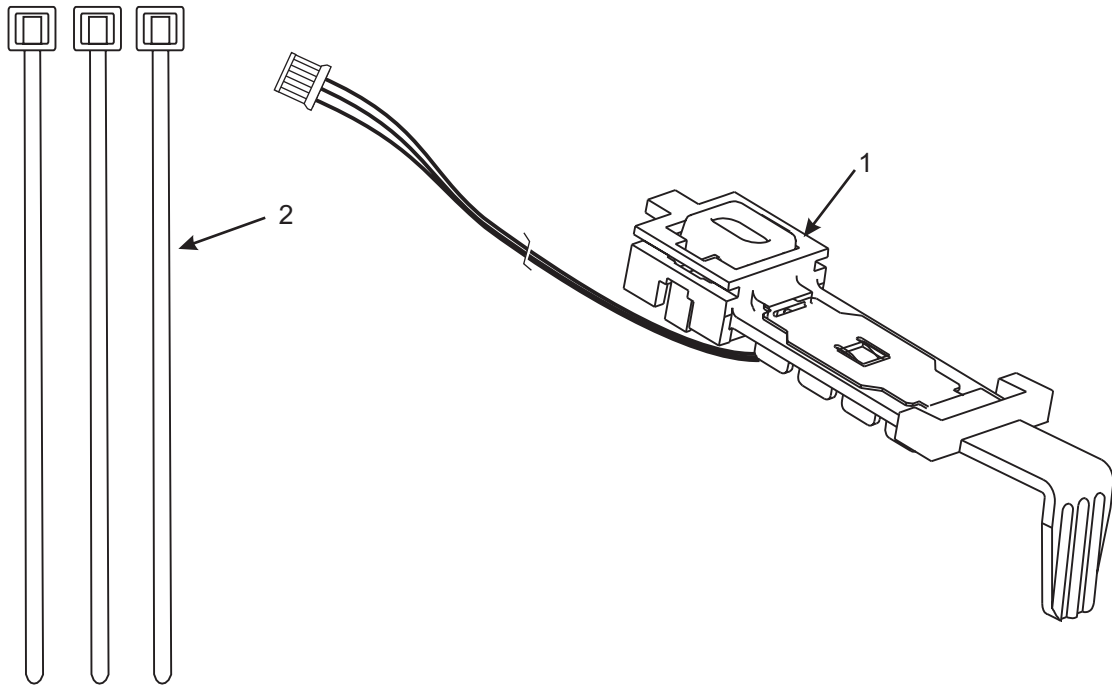


Figure 5-3. (Reflective) Media Sensor Assembly Maintenance Kit

Table 5-4. Platen Assembly

ITEM	PART NUMBER	DESCRIPTION	QTY
1	†HW44216	Screw, M4.2 x 1.41	1
2	77752M	Kit, Maintenance Optical (Transmissive) Media Sensor	1
3	77935M	Kit, Maintenance Media Edge Guide	1
4	†HW46128	Washer, Nylon	1
5	77807M	Kit, Assembly (Reflective) Media Sensor (See Figure 5-3.)	1
6	77023M	Kit, Maintenance Platen Roller Shaft (Z4M) (See Figure 5-5.)	1
6	77022M	Kit, Maintenance Platen Roller Shaft (Z6M) (See Figure 5-5.)	1
7	77765M	Kit, Maintenance Ribbon/Head Open Sensor	1
8	77078	Washer, Flat, 0.500 x 0.191 x 0.090	2
9	*HW77237	Screw, M4 x 0.7 x 10	3
10	77625M	Peel Tear Bar (Z4M)	1
10	77799M	Peal Tear Bar (Z6M)	1
11	77231	Screw, M3 x 8 mm	2
12	N/A	Washer, Nylon 0.2 x 0.625 x 0.020	1
13	†HW30208	Washer, Flat .500 x .191 x .030	1
14	N/A	Screw, M4 x 0.7 x 12 mm Hex Head	1
14	*HW77237	Screw, M4 x 0.7 x 10 mm Thread	1
15	77112M	Kit, Maintenance Latch (See Figure 5-10.)	1
N/A: Not Available Separately			

*Minimum Quantity of 5

†Minimum Quantity of 25

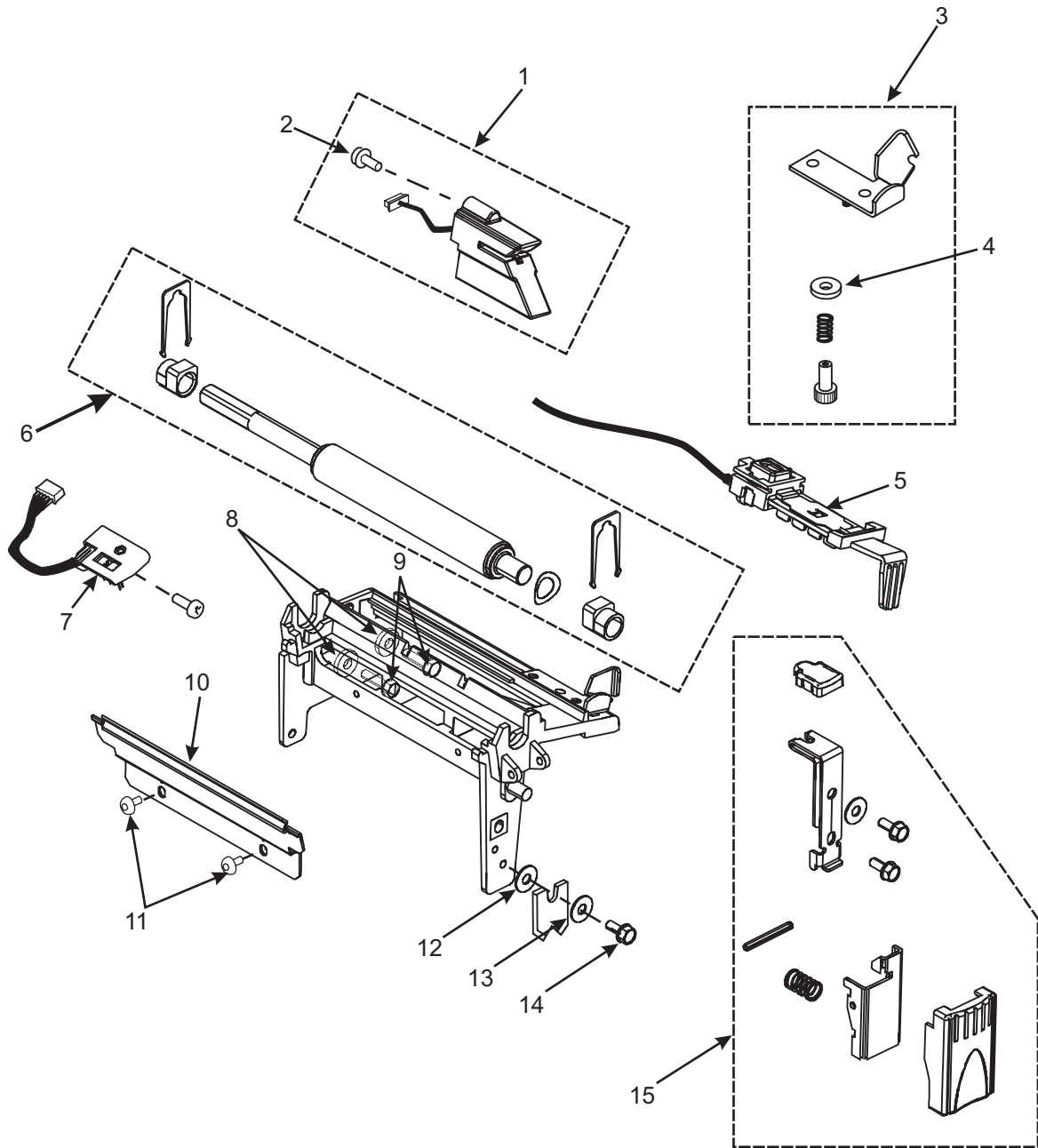


Figure 5-4. Platen Assembly

Table 5-5. Platen Roller Shaft Maintenance Kit

ITEM	PART NUMBER	DESCRIPTION	QTY
REF	77023M	Kit, Maintenance Platen Roller, Z4M	1
REF	77022M	Kit, Maintenance Platen Roller, Z6M	1
1	N/A	...Roller, Platen Shaft	1
2	N/A	...Bearing, Platen	1
3	N/A	...Spring, Clip	2
4	N/A	...Washer, Spring	1

N/A: Not Available Separately

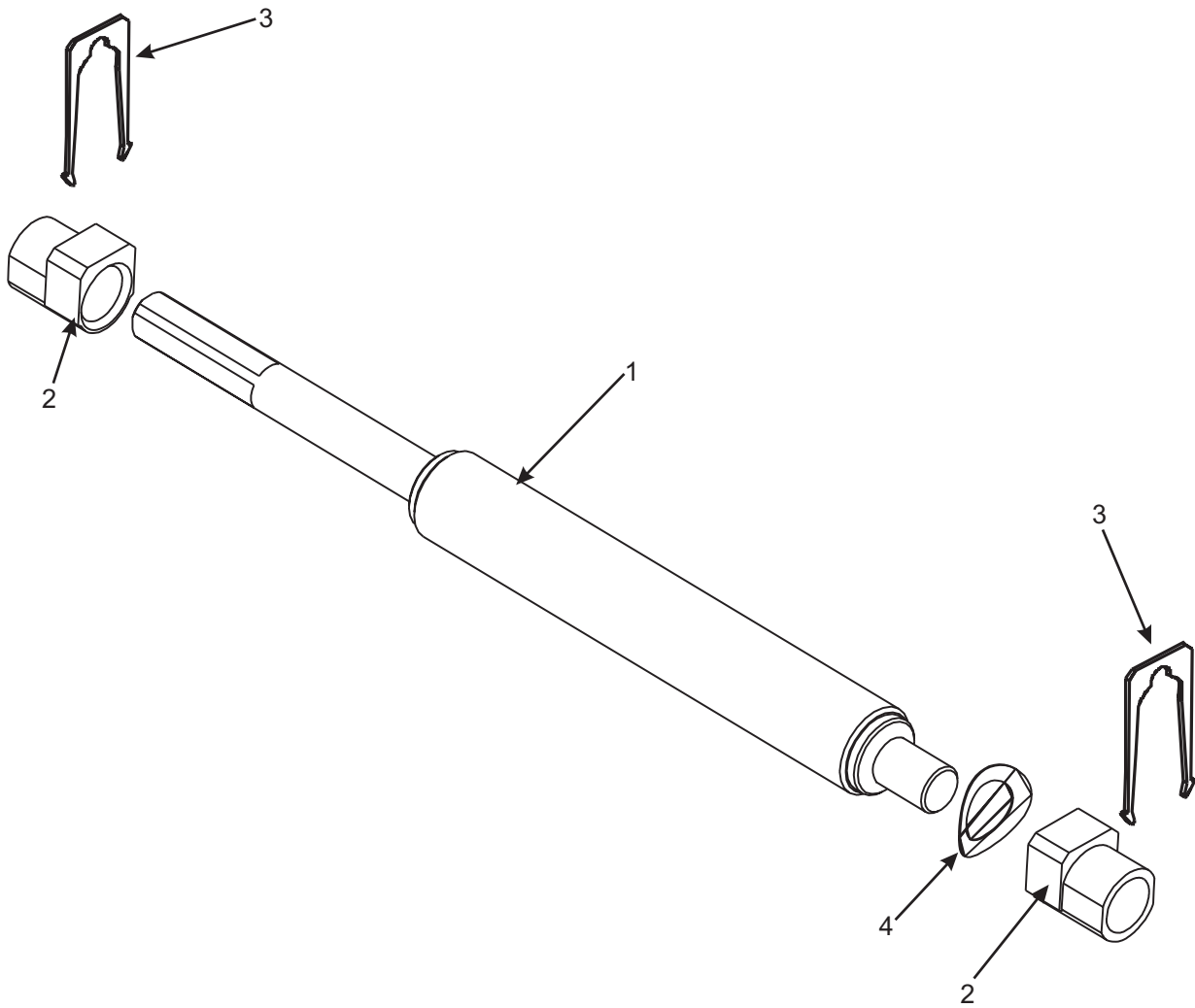


Figure 5-5. Platen Roller Shaft Maintenance Kit

Table 5-6. Printhead Housing Maintenance Kit

ITEM	PART NUMBER	DESCRIPTION	QTY
1	77171M	Kit, Maintenance Printhead Housing (203 dpi printhead) Z4M	1
2	77804M	Kit, Maintenance Cable Printhead 4 inch	1
2	77831M	Kit, Maintenance Cable Printhead 6 inch	1
3	77500M	Kit, Maintenance Printhead 300 dpi (Z4M)	1
3	77000M	Kit, Maintenance Printhead 203 dpi (Z4M)	1
3	77001M	Kit, Maintenance Printhead 203 dpi (Z6M)	1
3	77501M	Kit, Maintenance Printhead 300 dpi (Z6M)	1
4	*HW77047	. Screw, Printhead Mounting	1
N/S	77802M	Kit, Maintenance Printhead Hardware 4 inch	1
N/S	N/A	. Cable, Braid 4 inch	1
N/S	N/A	. Spring, Compression 0.21 x .030 x 1.5	1
N/S	77049-104	. Plate, Ribbon Strip (Z4M)	1
N/S	77049-168	. Plate, Ribbon Strip (Z6M)	1

N/S: Not Shown
N/A: Not Available Separately

*Minimum Quantity of 5

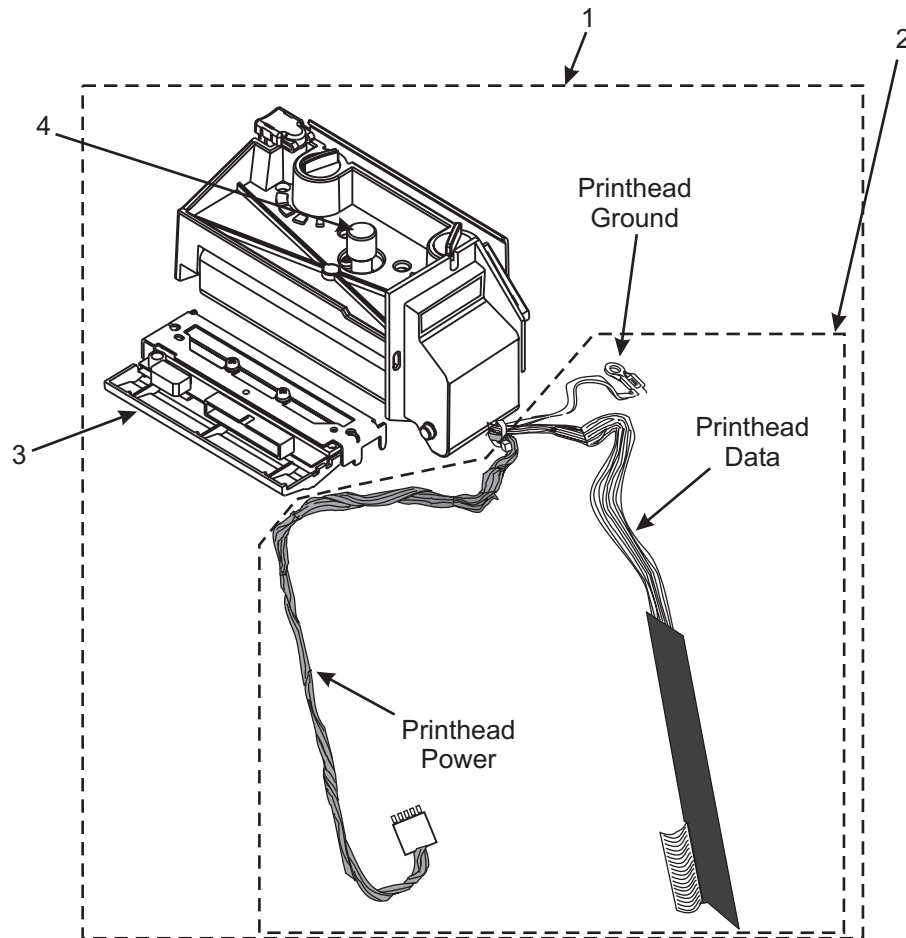


Figure 5-6. Printhead Housing Maintenance Kit

Table 5-7. Static Brush Assembly Maintenance Kit

ITEM	PART NUMBER	DESCRIPTION	QTY
REF	77302M	Kit, Maintenance Static Brush Assembly (Z4M)	1
REF	77303M	Kit, Maintenance Static Brush Assembly (Z6M)	1
1	††HW10401	. Screw, M3 x 0.5	2
2	10472	. Washer, Star M3	2
3	77318	. Brush, Ribbon Static	1
3	77319	Brush, Ribbon Static	1
4	N/A	. Bracket, Ribbon Static Brush	1
5	*HW77237	. Screw, M4 x 0.7 x 10 mm	2

N/A: Not Available Separately

*Minimum Quantity of 5
 ††Minimum Quantity of 50

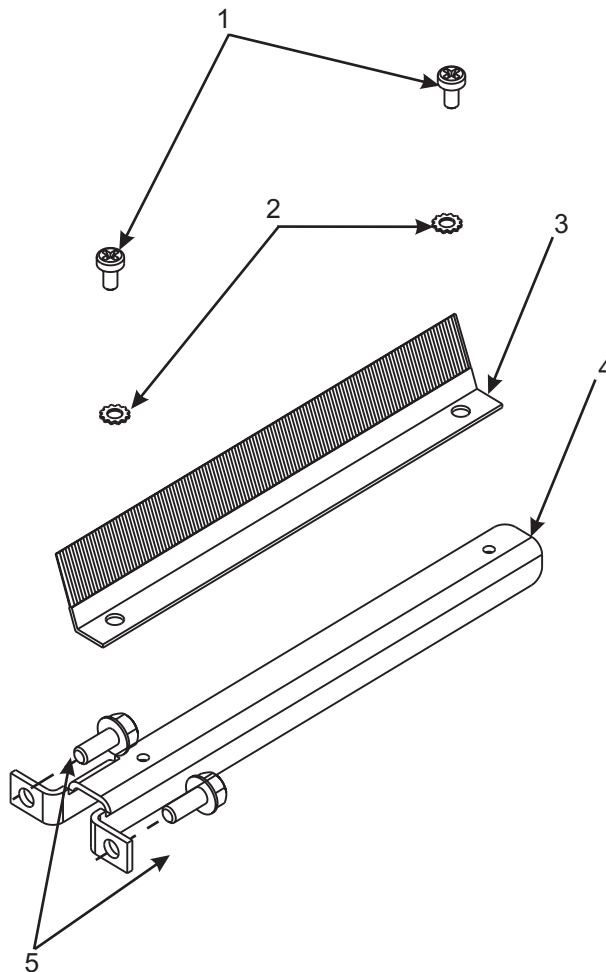


Figure 5-7. Static Brush Assembly Maintenance Kit

Table 5-8. Dancer Assembly Maintenance Kit

ITEM	PART NUMBER	DESCRIPTION	QTY
1	77331M	Kit, Maintenance Dancer Assembly (Z6M) (Sold as a Complete Assembly only for Z6M)	1
2	77238M	Kit, Maintenance Dancer Assembly (Z4M)	1
3	N/A	. Bearing, 0.38 x 0.63 x 0.50	2
4	N/A	. Spring, Torsion	1
5	N/A	. Dancer	1
6	††HW30224	. Ring, External Crescent, 0.375	2
7	N/A	Shaft, Dancer	1
8	†HW44356	Washer, 0.198 x 0.75 x 0.085	1
9	†HW10432	Screw, Cap M4 x 0.7	1
N/A: Not Available Separately			

†Minimum Quantity of 25
 ††Minimum Quantity of 50

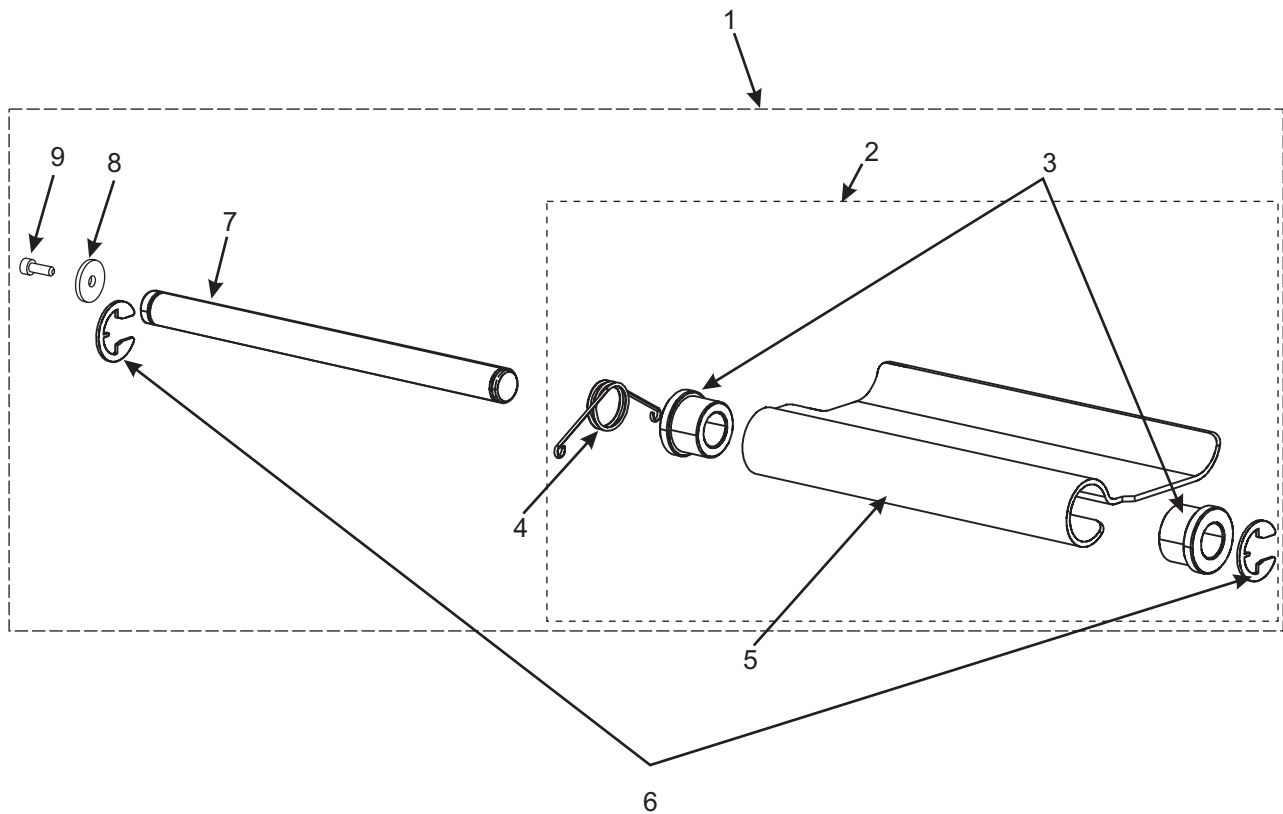


Figure 5-8. Dancer Assembly Maintenance Kit

Table 5-9. Ribbon Supply Assembly Maintenance Kit

ITEM	PART NUMBER	DESCRIPTION	QTY
REF	77085M	Kit, Maintenance Ribbon Supply, Z4M	1
REF	77082M	Kit, Maintenance Ribbon Supply, Z6M	1
1	†HW10432	Screw, Cap, M4 x 0.7	1
2	†HW44356	Washer, 0.198 x 0.75 x 0.085	1
3	N/A	Shaft, Ribbon Supply	1
4	44390	Washer, 0.500 x 0.377 x 0.020	1
5	††HW30224	Ring, Crescent, Ext.	1
6	N/A	Spindle, Inner	1
7	N/A	Blade, Spindle	2
8	N/A	Spring, Tension	2
9	†HW44147	Screw, Set Cup, M3 x 0.5	4
10	N/A	Cup, Spring Clutch	2
11	††HW10401	Screw, M3 x 0.5	2
12	N/A	Blade	1
13	N/A	Spindle, Inner	1
14	N/A	Spindle, Outer	1

N/A: Not Available Separately

†Minimum Quantity of 25
 ††Minimum Quantity of 50

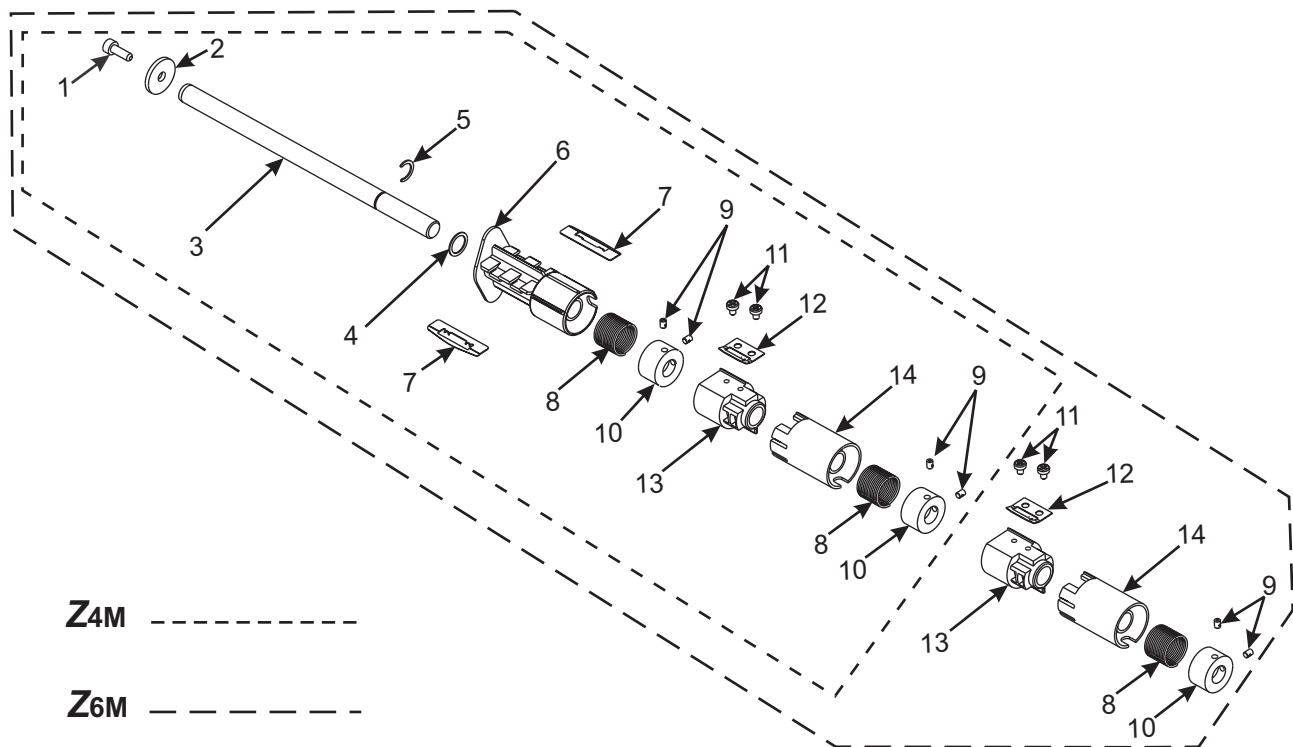


Figure 5-9. Ribbon Supply Maintenance Kit

Table 5-10. Print Mechanism Latch Kit

ITEM	PART NUMBER	DESCRIPTION	QTY
REF	77112M	Kit, Latch Print Mechanism	REF
1	77276	. Cap, Strike Plate	1
2	N/A	. Latch, Strike Plate	1
3	10473	. Washer, Flat M4	1
4	Q10011	. Screw, M4 x 10 Cp Hx H Bo	1
5	*HW77237	. Screw, M4 x 0.7 x 10 mm	1
6	77236	. Cover, Latch Plate	1
7	N/A	. Latch	1
8	N/A	. Spring, Compression	1
9	N/A	. Pin, Slot Spring	1

N/A: Not Available Separately

*Minimum Quantity of 5

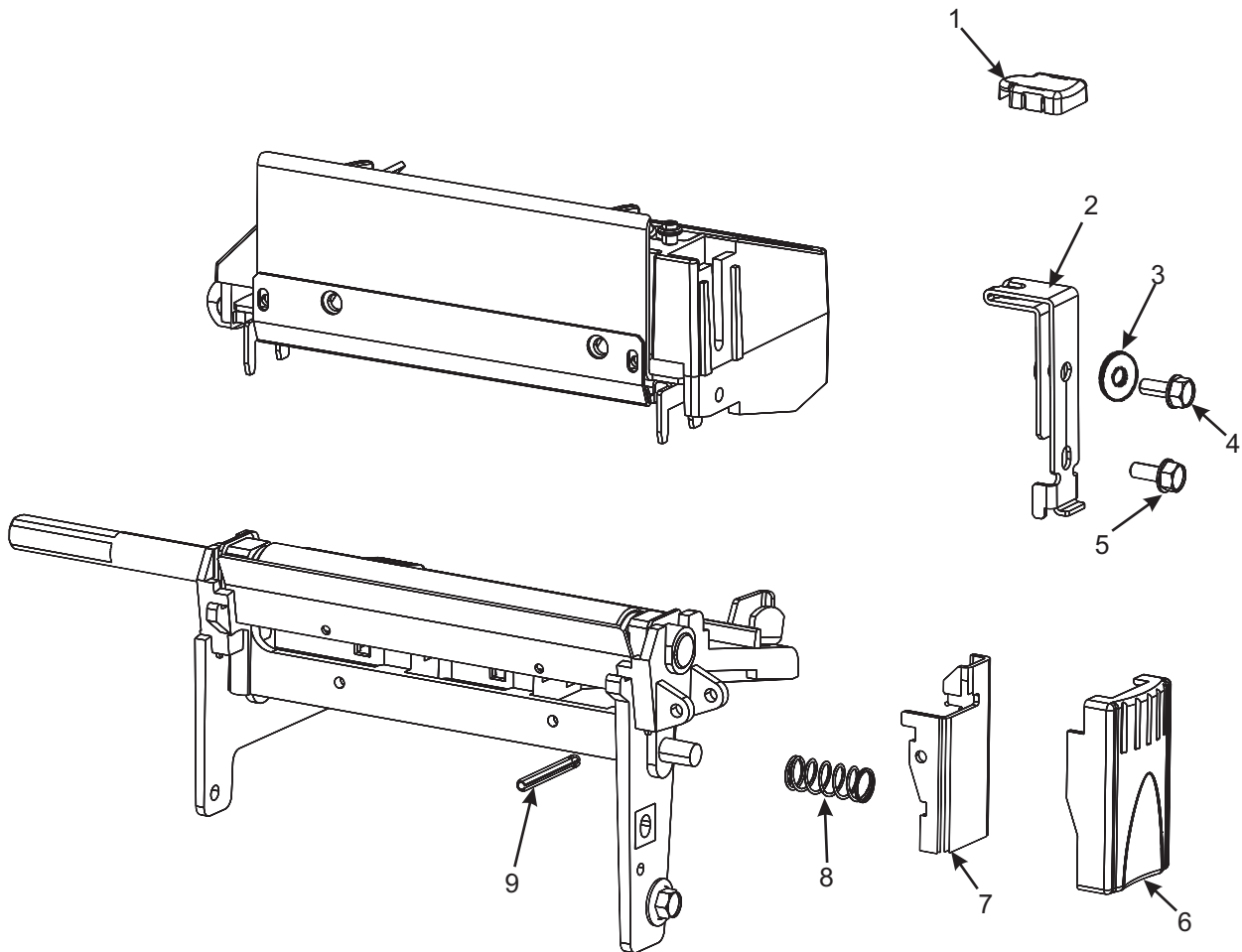


Figure 5-10. Print Mechanism Latch Kit

Table 5-11. Drive System – Belts/Pulleys

ITEM	PART NUMBER	DESCRIPTION	QTY
1	77814M	Kit, Maintenance Clutch Ribbon Take-Up	1
2	N/A	. Hub, Clutch	1
3	N/A	. Gear, Clutch	1
4	N/A	. Bearing, Clutch	1
5	N/A	. Spring, Return	1
6	N/A	Washer, Nylon Flat, 0.375 x 0.75 x 0.062	1
7	N/A	Washer, Flat 0.379 x 0.53 x 0.056	2
8	44118	Collar, Shaft 0.377 x 0.750	1
9	†HW4147	. Screw, Set, M3 X 0.5	2
10	77803M	Kit, Maintenance Drive System	1
11	N/A	. Gear, Compound	1
12	N/A	. Gear, Intermediate	1
13	77396	. Belt, 080P 144Tcndtv PU	1
14	N/A	. Pulley, Compound	1
15	†HW10856	. Screw, Set M4 x 0.7 x 10 mm	2
16	N/A	Nut, Adjusting	1
17	*HW77237	Screw, M4 x 0.7	2
18	†HW10432	Screw, Cap, M4 x 0.7 x 12 mm	1
19	77813M	Kit, Maintenance Stepper Motor	1
20	†HW44924	Screw, M3 x 0.5 x 8 mm	1
21	N/A	Screw, M6 x 20	1
N/A: Not Available Separately			

*Minimum Quantity of 5

††Minimum Quantity of 50

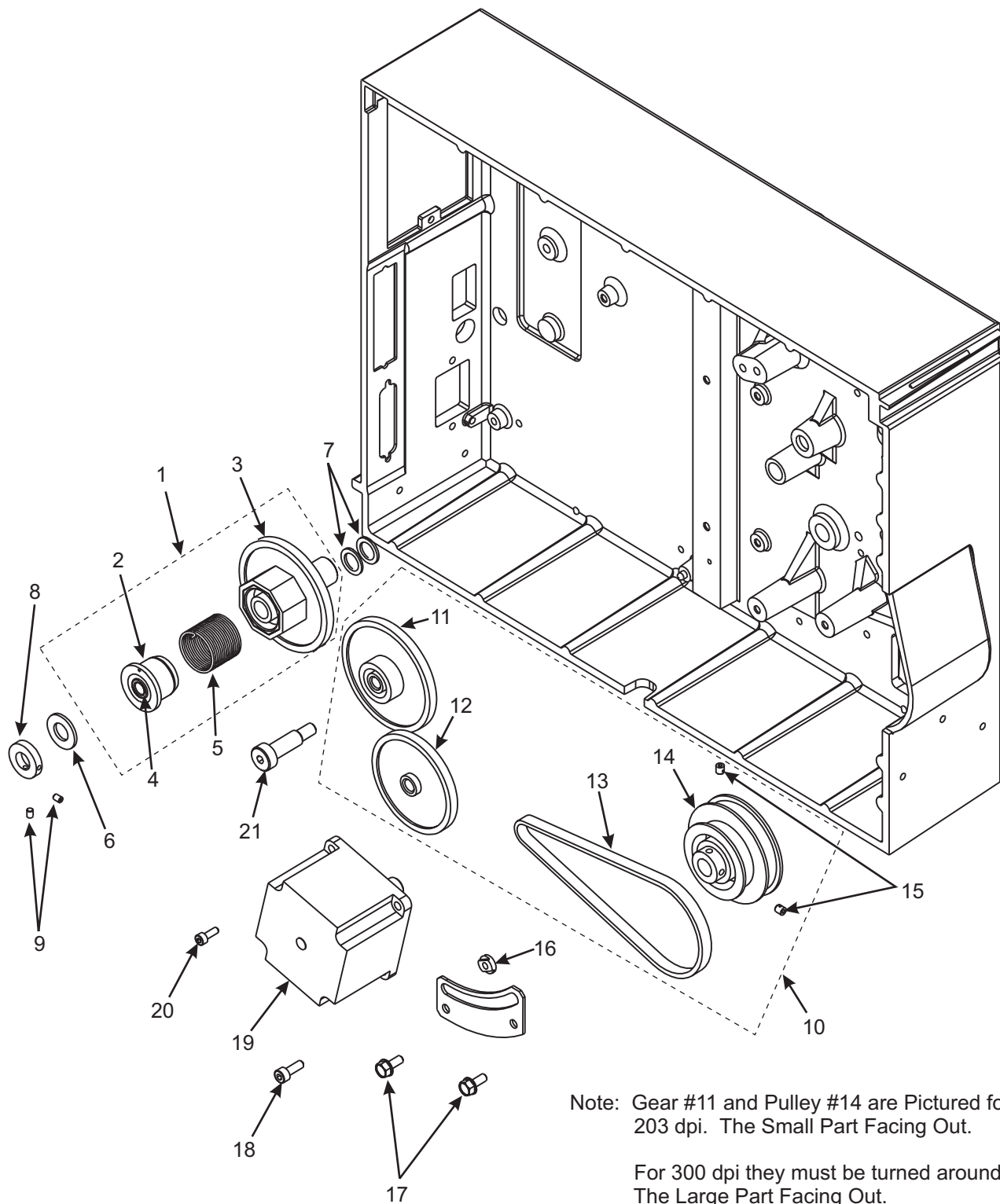


Figure 5-11. Drive System – Belts/Pulleys

Table 5-12. Cutter Kit (Option)

ITEM	PART NUMBER	DESCRIPTION	QTY
1	77971	Kit, Optional Cutter, (Z4M)	1
1	77972	Kit, Optional Cutter, (Z6M)	1
2	77041	. Tray, Catch (Z4M)	1
2	77997	. Tray, Catch (Z6M)	1
3	77973M	. Cutter Cover and PC Board Assembly (Z4M)	1
3	77697	. . Cutter Cover (Z4M)	1
3	77974M	. Cutter Cover and PC Board Assembly (Z6M)	1
3	77698	. Cutter Cover (Z6M)	1
4	77990M	. Kit, Module Cutter (Z4M)	1
4	77401M	. Kit, Module Cutter (Z6M)	1
5	N/A	. Screw, M3	2
6	77630	. Cable, Cutter	1
7	77427	. Screw, Socket Head M4 x 10	1
8	77408	. Static Brush, Cutter (Z4M)	1
8	77409	. Static Brush, Cutter (Z6M)	1

N/A: Not Available Separately

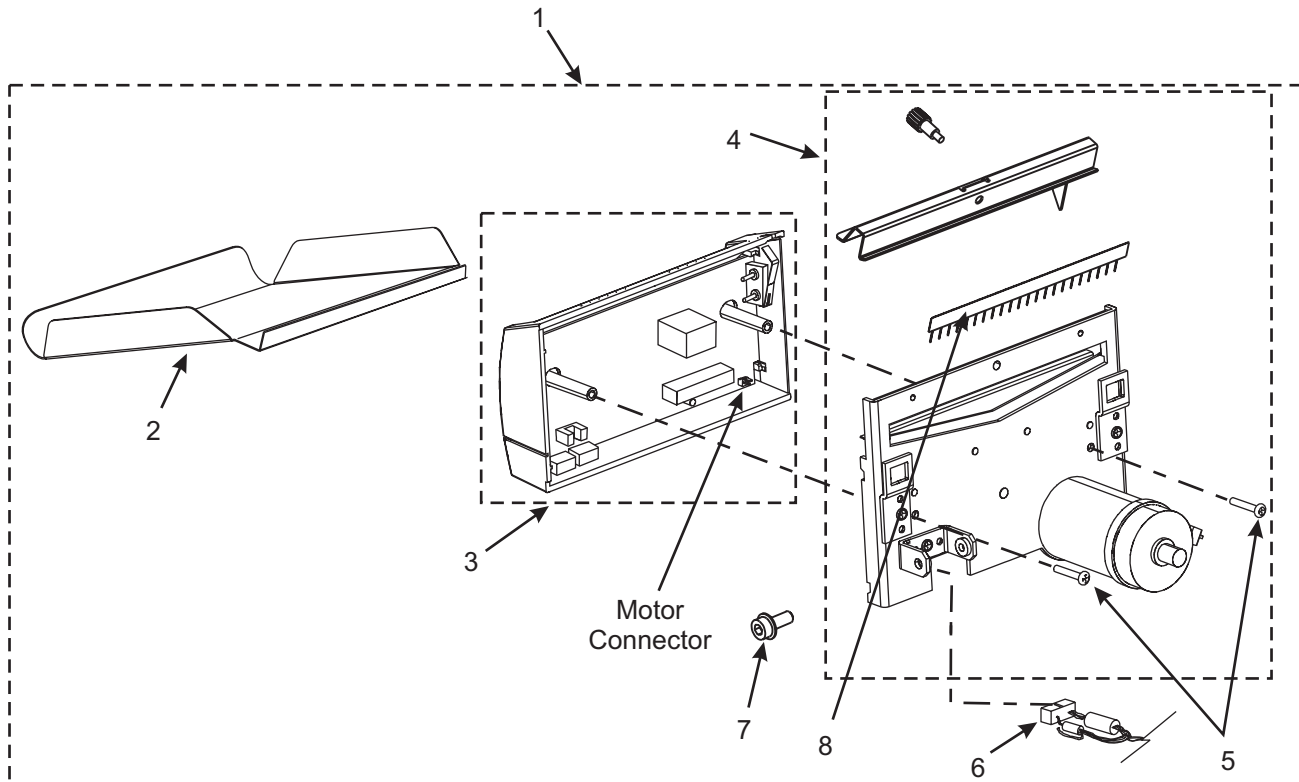


Figure 5-12. Cutter Kit (Optional)

Table 5-13. Value Peel Assembly (Optional)

ITEM	PART NUMBER	DESCRIPTION	QTY
1	78002M	Kit, Maintenance Value Peel, Z4M	1
1	78002-6M	Kit, Maintenance Value Peel, Z6M	1
2	77231	. Screw, M3 x 8 mm	2
3	77197M	Kit, Maintenance Value Peel Pinch Roller, Z4M	1
3	77727M	Kit, Maintenance Value Peel Pinch Roller, Z6M	1
4	10094	. E-Ring, 3 mm	2
5	N/A	. Bearing	2
6	N/A	. Roller, Pinch	1
N/S	77222	. Brush, Value Peel Static Z4M	1
N/S	77738	. Brush, Value Peel Static Z6M	1

N/S: Not Shown

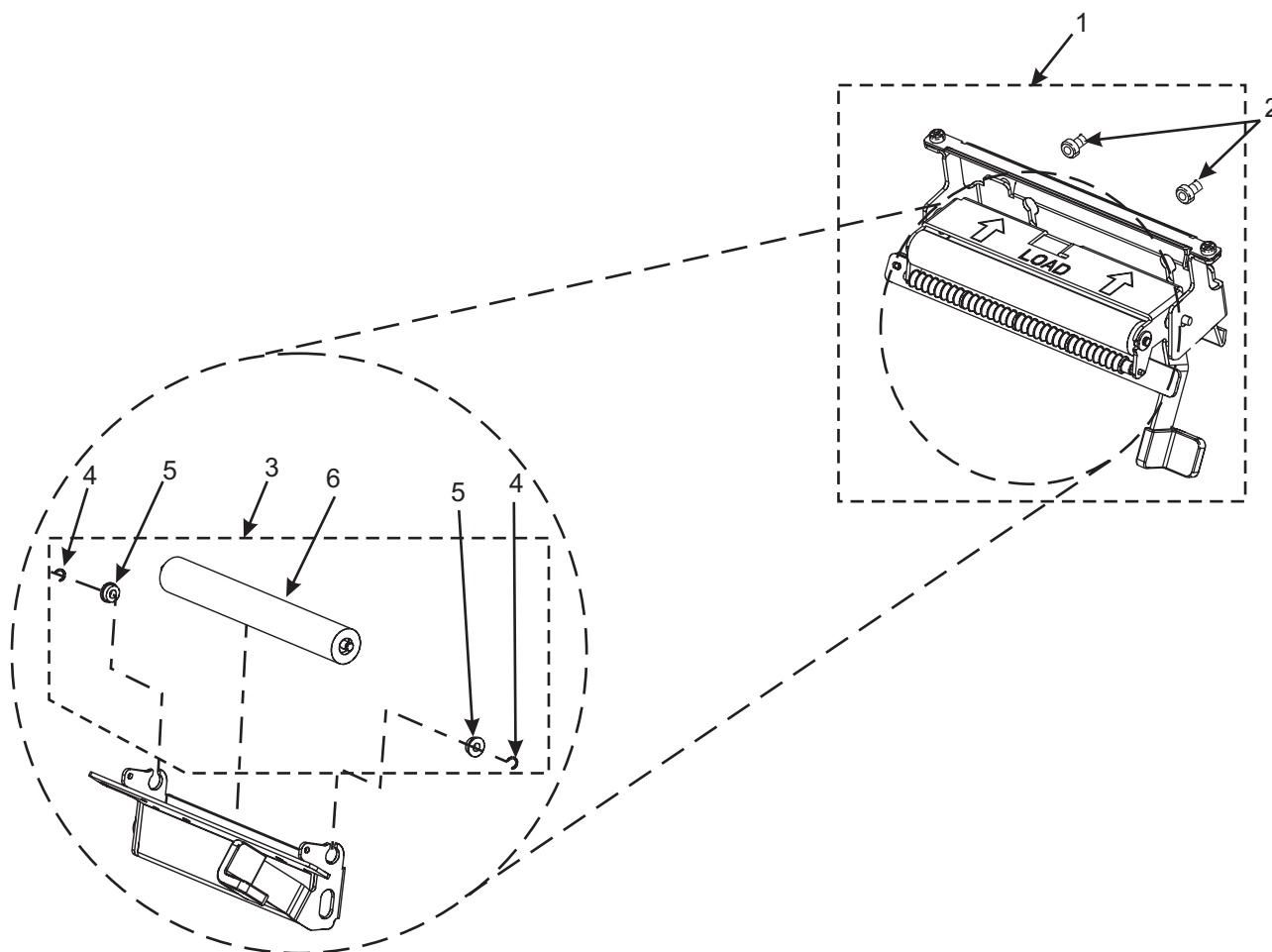


Figure 5-13. Value Peel Assembly

Table 5-14. Liner Take-up Assembly (Z4M Only)

ITEM	PART NUMBER	DESCRIPTION	QTY
1	77347M	Kit, Z4M Liner Take-up	1
2	77648	. Cable, Motor	1
3	*HW77237	. Screw, M4 x 10 mm	2
4	06313	. E-ring	1

*Minimum Quantity of 5

NOTE: The Liner Take-up is Only Available for the Z4M!!!

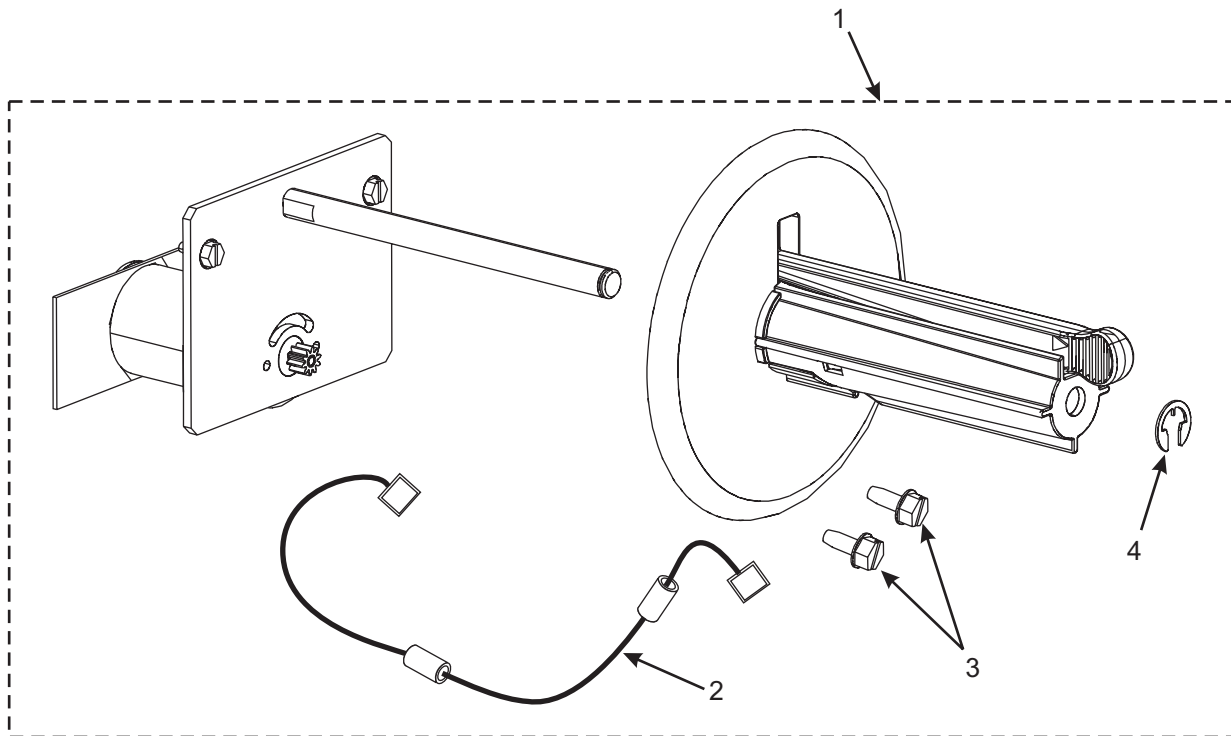


Figure 5-14. Liner Take-up Assembly (Z4M Only)

Table 5-15. Power Rewind/Peel (Option)

ITEM	PART NUMBER	DESCRIPTION	QTY
1	77058	Kit, Power Rewind/Peel, Z4M	1
1	77059	Kit, Power Rewind/Peel, Z6M	1
2	77498M	. Kit, Maintenance Motor/Spindle Z4M	1
3	77898M	. Kit, Maintenance Motor/Spindle Z6M	1
3	77740M	. Kit, Maintenance PCB DC Motor	1
4	77648M	. Cable, Media Rewind	1
5	Q06020	. . Cable Tie 0.09 W x 3.63 L	1
6	77247M	. Kit, Maintenance Power Peel, Z4M	1
6	77257M	. Kit, Maintenance Power Peel, Z6M	1
7	*HW77237	. Screw, M4 x 0.7 x 10 mm	8
8	N/A	. Pan	1

N/A: Not Available Separately

*Minimum Quantity of 5

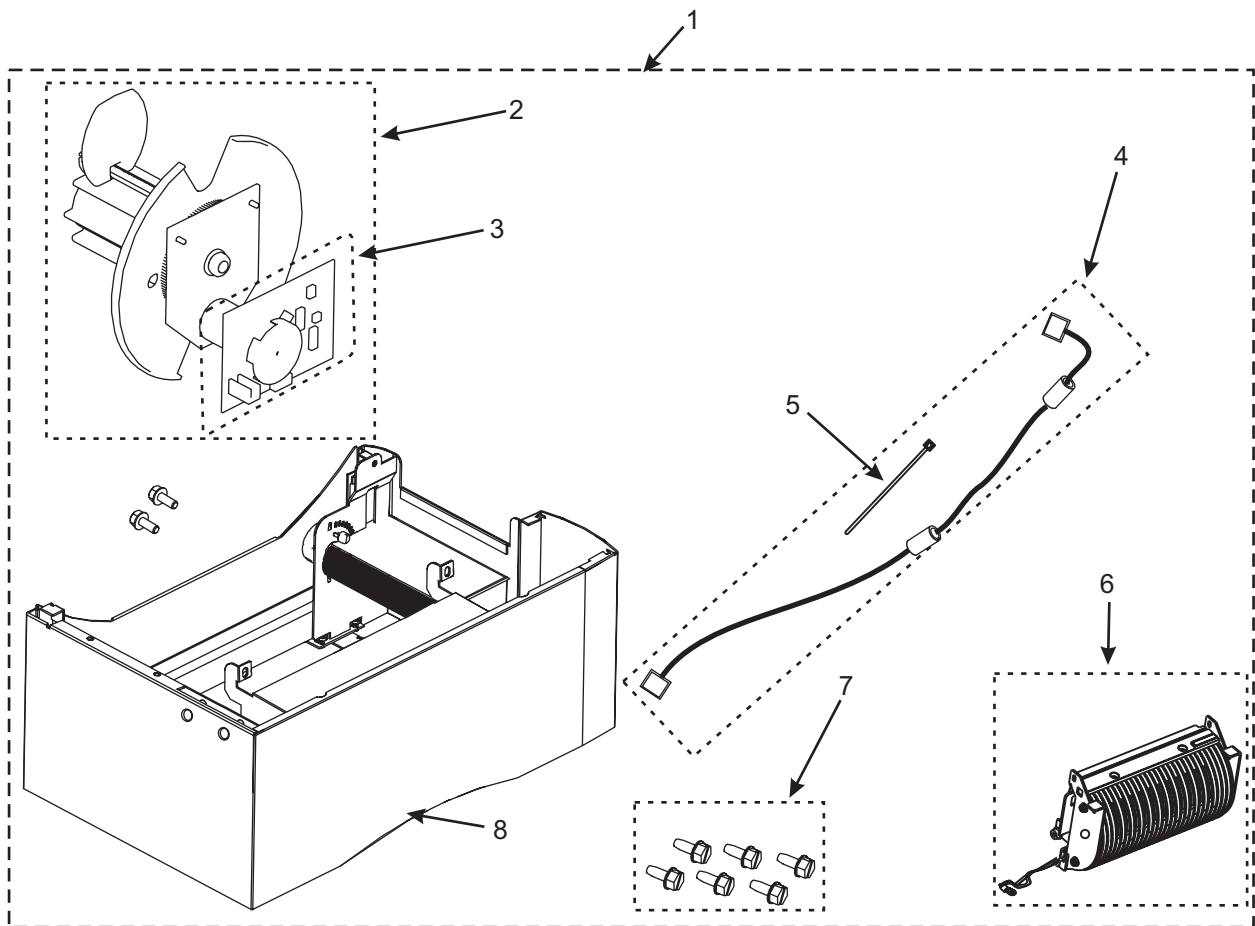


Figure 5-15. Power Rewind/Peel Option

Table 5-16. Value Peel Rewind Kit (Released in Fourth Quarter 2001)

ITEM	PART NUMBER	DESCRIPTION	QTY
1	78005	Kit, Rewind/Peel, Z4M	1
1	Factory Install Only	Kit, Power Rewind/Peel, Z6M	1
2	78007M	. Kit, Maintenance Motor/Spindle Z4M	1
3	78007-6M	. Kit, Maintenance Motor/Spindle Z6M	1
3	78010M	. Kit, Maintenance Value Peel Rewind PCB	1
4	77648M	. Cable, Media Rewind	1
5	Q06020	. . Cable Tie 0.09 W x 3.63 L	1
6	78002	. Kit, Peel, Z4M	1
7	78002-6	. Kit, Peel, Z6M	1
8	*HWW77237	. Screw, M4 x 0.7 x 10 mm	8
9	N/A	. Pan	1

N/A: Not Available Separately

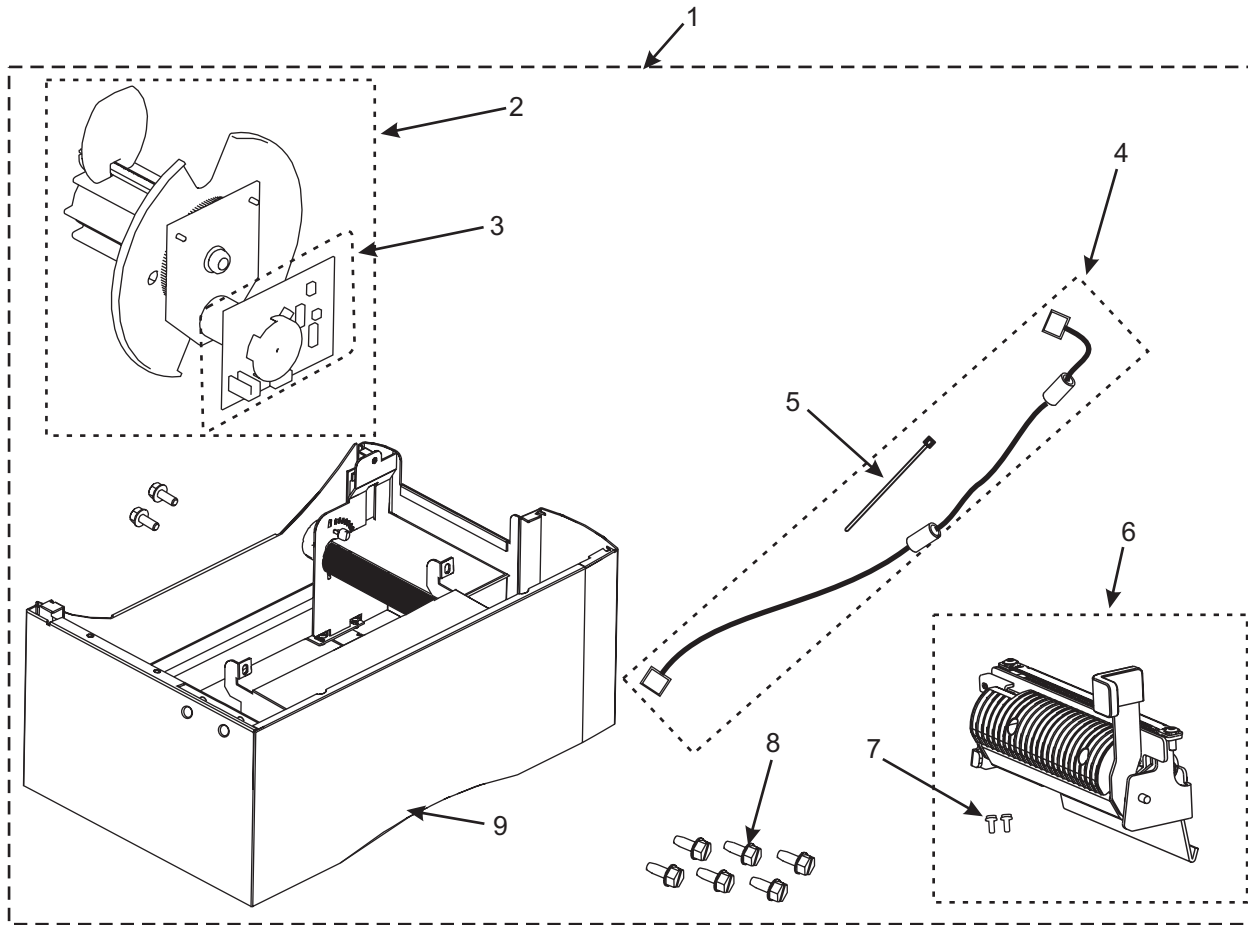


Figure 5-16. Value Peel Rewind Kit

Table 5-17. Miscellaneous Options

Item	Part Number	Description	Qty
1	48924	Kit, Field Upgrade IBM Twinax	1
2	48752	. Assembly, PCB IBM Twinax	1
3	30757	. AP Cable, Ribbon 40 Option Signal	1
4	30753	. Assembly, Cable IBM Twinax	1
5	48925	Kit, Field Upgrade IBM Coax	1
6	48761	. Assembly, PCB IBM Coax	1
7	30757	. AP Cable, Ribbon 40 Option Signal	1
8	48753	. Cable, Coax Ext. IBM	1
9	46692	Kit, Upgrade ZebraNet II External	1
10	46689	Kit, Upgrade ZebraNet II Internal	1
11	—	. PA Cable, Internal	1
12	46709	. PA Cable Tape ZebraNet II	1
13	47210	. Grommet, Strip 2-1/8	1
14	46686	. PA 10 Base T Web Internal	1
N/S	77823	Kit, Upgrade 300 dpi Z4M	
N/S	77824	Kit, Upgrade 203 dpi Z4M	
N/S	77978	Kit, Upgrade 203 dpi Z6M	
N/S	77978	Kit, Upgrade 300 dpi Z6M	

N/S: Not Shown

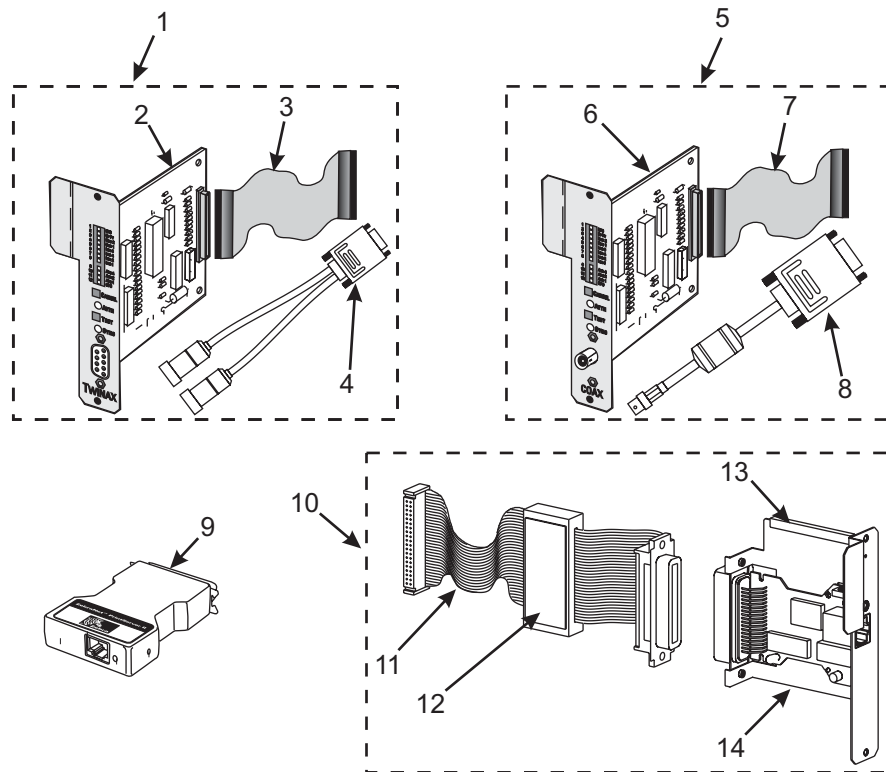


Figure 5-17. Miscellaneous Options

