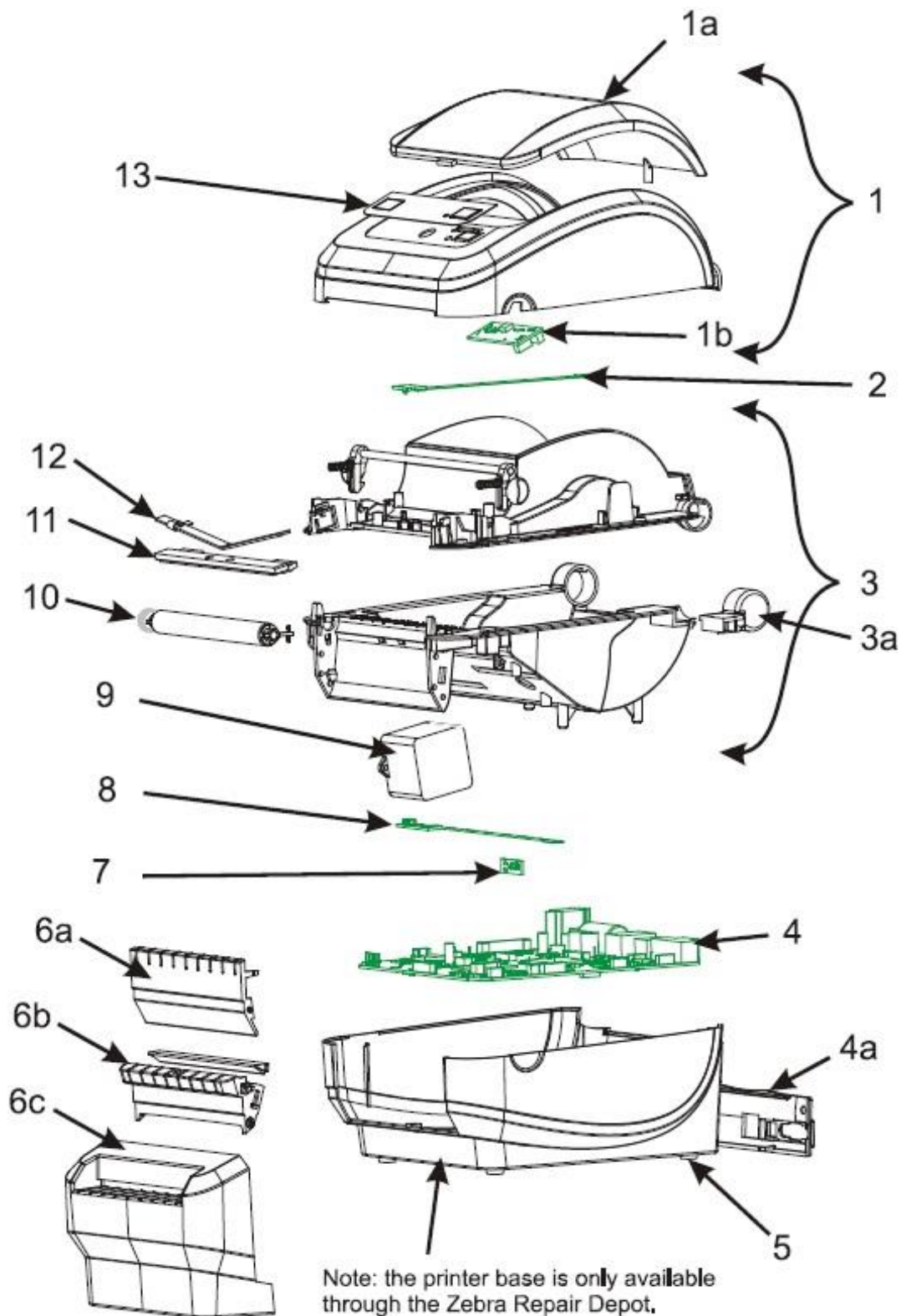


# Spare Parts List Desktop Printers

**GX420d: GX42-2X2XXX-XXX** (The "2" in the 8th digit is the key designator for R2.0 on all G-series)



## Spare Parts List Desktop Printers

**GX420d: GX42-2X2XXX-XXX** (The "2" in the 8th digit is the key designator for R2.0 on all G-series)

Item	Description	Part Number
1	Cover Assy (Direct Thermal) (includes Media Window)	105934-005
	Cover Assy w/cutter (Direct Thermal)	105934-108
	Cover Assy w/cutter, wireless (Direct Thermal)	105934-109
	LCD Cover Assy (Direct Thermal) (includes Media Window)	105934-049
1a	Media Window (Direct Thermal)	105934-001
1b	Feed Switch (Direct Thermal)	105934-003
	LCD Display/Feed Switch (with Bluetooth Wireless)	105934-056
	LCD Display/Feed Switch (with 802.11g Wireless)	105934-057
2	Upper Gap Sensor, Fixed (Direct Thermal)	P1027135-001
2	Upper Gap Sensor, Movable (Direct Thermal)	P1027135-002
3	Print Mech. Fxd Sensor (DT) (inc Hinge, PH Cables, Feed Switch Cable)	P1027135-005
3	Print Mech. Mvbl Snsr (DT) (inc Hinge, Prnt Head Cbls, Feed Swtch Cable)	P1027135-006
3a	Cover Hinge (Direct Thermal)	105934-047
4	GX Main Logic Board, USB/Serial/Parallel, ZBI	P1027135-017
4	GX Main Logic Board, USB/Serial/Parallel, 64MB, XMEM, RTC, ZBI	P1027135-018
4	GX MLB, USB/Serial/Parallel, 64MB, RTC, 203DPI, Liner Tag Cutter, ZBI	P1027135-035
4a	Back Panel, USB/Serial/Parallel (Direct Thermal)	P1027135-019
4	GX Main Logic Board, USB/Serial/Ethernet, ZBI	P1027135-021
4	GX Main Logic Board, USB/Serial/Ethernet, 64MB, RTC, 203DPI, ZBI	P1027135-036
4	GX MLB, USB/Serial/Ethernet, 64MB, RTC, 203DPI, Liner Tag Cutter, ZBI	P1027135-033
4a	Back Panel, USB/Serial/Ethernet (Direct Thermal)	105934-086
4	GX Main Logic Board, USB/Serial/Bluetooth 64MB, 203 dpi, ZBI	P1027135-038
4	GX MLB, USB/Serial/Bluetooth, 64MB, 203DPI, Liner Tag Cutter, ZBI	P1027135-031
4a	Back Panel, USB/Serial/Wireless (Direct Thermal)	105934-089
4	GX MLB USB, Serial, 802.11b/g Wireless, 64MB, 203DPI, RTC, CTR, ZBI, ZComax	P1040103-003
4	GX MLB USB, Serial, 802.11b/g Wireless, 64MB, 203DPI, RTC, ZBI, ZComax	P1040103-004
	Interface Fuse, 1A	105934-076
5	Rubber Foot (set of 5)	105934-024
6a	Front Bezel, Std (Direct Thermal)	105934-025
6b	Front Bezel, Dispenser (Direct Thermal)	P1027135-044
6c	Light Duty Cutter (Direct Thermal)	105934-027
6c	Medium Duty Liner Free Cutter (Direct Thermal)	105934-055
6c	Medium Duty Full Cut Cutter (Direct Thermal)	105934-029
7	Head Up Sensor (Direct Thermal)	105934-041
8	Gap/Blackline Sensor, Fixed (Direct Thermal)	P1027135-011
8	Gap/Blackline Sensor, Moveable	P1027135-012
9	Motor Assy., 203dpi (Direct Thermal)	P1027135-041
10	Platen, Std (Direct Thermal)	P1027135-039
	Platen Bearings (Direct Thermal)	105934-059

## Spare Parts List Desktop Printers

**GX420d: GX42-2X2XXX-XXX** (The "2" in the 8th digit is the key designator for R2.0 on all G-series)

---

Item	Description	Part Number
11	Printhead, 203dpi (Direct Thermal)	105934-037
12	Printhead Spring/Clip (Direct Thermal)	105934-040
13	Nameplate, GX420d (Direct Thermal)	105934-062
	Nameplate, GX420d with LCD (Direct Thermal)	105934-067
Not Shown	Shipping Pack – Packaging for shipping the printer (Direct Thermal)	105934-150
	Users CD-ROM	P1027135-049
	Power Supply, 75W, C13, with US & Euro Cords	P1079903-026
	Power Cord, U.S. 120V IEC320C13 (set of 5)	105950-014
	Power Cord, Euro 220V IEC320C13 (set of 5)	105950-015
	Power Cord, U.K. 240V IEC320C13 (set of 5)	105950-030
	Power Cord, Australia 240V IEC320C13 (set of 5)	105950-029
	Power Cord, China 220V C13 (set of 5)	105950-078
	Power Cord, Japan 125V JAPAN C13 (set of 5)	105950-079
	Power Cord, 220V Argentina C13 (set of 5)	105950-080
	Power Cord, 10A NBR 14136, Brazil (set of 5)	P1033401
	CD-ROM, Service, G-Series	105950-087