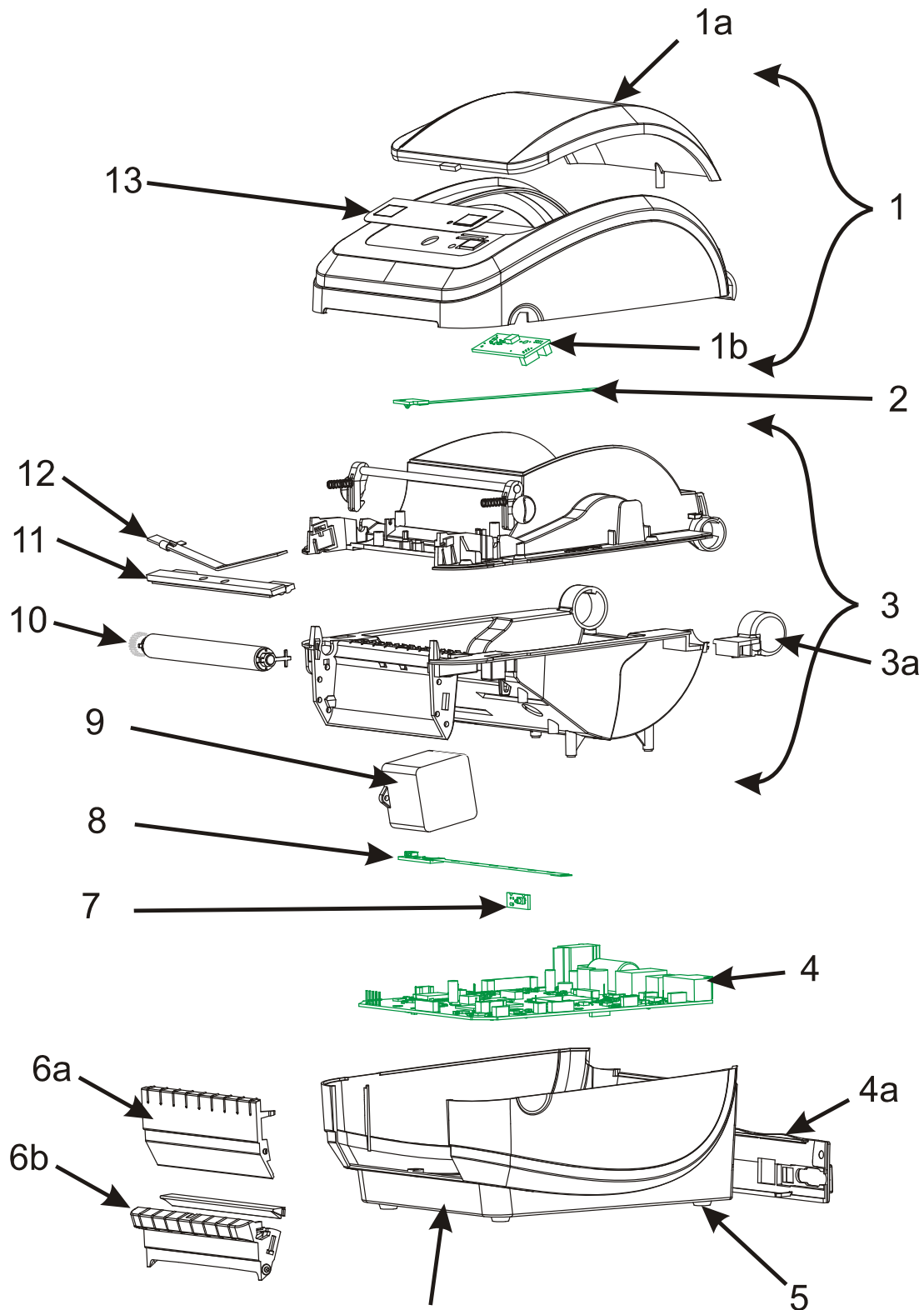


Spare Parts List Desktop Printers

GK420d - GK42-2X2XXX-XXX (The "2" in the 8th digit is the key designator for R2.0 on all G-series)



Note: the printer base is only available through the Zebra Repair Depot.

Spare Parts List Desktop Printers

GK420d - GK42-2X2XXX-XXX (The "2" in the 8th digit is the key designator for R2.0 on all G-series)

Item	Description	Part Number
1	Cover Ass'y (d) (includes Media Window)	105934-005
1a	Media Window (d)	105934-001
1b	Feed Switch (d)	105934-003
2	Upper Gap Sensor, Fixed (d)	P1027135-001
3	Print Mech. Fixed Sensor (d) (includes Hinge, Print Head Cables, Feed Switch Cable)	P1027135-005
3a	Cover Hinge (d)	105934-047
4	GK Main Logic Board, USB/Serial/Parallel	P1027135-015
4a	Back Panel, USB/Serial/Parallel (d)	P1027135-019
4	GK Main Logic Board, USB/Ethernet	P1027135-016
4a	Back Panel, USB/Ethernet (d)	105934-074
	Interface Fuse, 1A	105934-076
5	Rubber Foot (set of 4)	105934-024
6a	Front Bezel, Std (d)	105934-025
6b	Front Bezel, Dispenser (d)	P1027135-044
7	Head Up Sensor (d)	105934-041
8	Gap/Blackline Sensor, Fixed (d)	P1027135-011
9	Motor Assy., 203dpi	P1027135-041
10	Platen, Std (d)	P1027135-039
	Platen Bearings (d)	105934-059
11	Printhead, 203dpi (d)	105934-037
12	Printhead Spring/Clip (d)	105934-040
13	Nameplate, GK420d	105934-060
	Shipping Pack (d)	105934-050
	Users CD-ROM	105934-052
	Power Supply, 70W C13 with US & Euro Cords	105934-053
	Power Cord, 120V US C13 (set of 5)	105950-014
	Power Cord, 220V Euro C13 (set of 5)	105950-015
	Power Cord, 240V UK,C13 (set of 5)	105950-030
	Power Cord, 240V AUS C13 (set of 5)	105950-029
	Power Cord, 220V China C13 (set of 5)	105950-078
	Power Cord, 125V Japan C13 (set of 5)	105950-079
	Power Cord, 220V Argentina C13 (set of 5)	105950-080
	Service CD_ROM	105934-087